



PETERSON FARMS CHAROLAIS
TOP PICK
32nd Annual Bull Sale

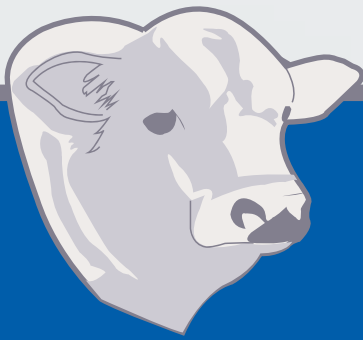
APRIL 5, 2025

Saturday • 1 p.m.

Peterson Farms' Sale Facility



**CHAROLAIS, ANGUS,
RED ANGUS & MAINE BULLS**



PETERSON FARMS CHAROLAIS
TOP PICK
32nd Annual Bull Sale

April 5, 2025

Saturday • 1 p.m.

Peterson Farms' Sale Facility

GPS ADDRESS:

7285 Outer Road, Mountain Grove, MO 65711

LODGING:

Comfort Inn (417) 349-6118
Mountain Grove, MO

SALE-DAY PHONES:

Steve Peterson (417) 259-1493
Clifford C. Mitchell (405) 246-6324

SCHEDULE OF EVENTS:

Friday, April 4

Cattle available for viewing

Saturday, April 5

9:00 a.m.—View offering

1:00 p.m.—32nd Annual Top Pick
Charolais Bull Sale

Complimentary Lunch Will Be Available



SALE MANAGER:

Clifford C. Mitchell
(405) 246-6324
e-mail: ccmosu@msn.com

DELIVERY AVAILABLE..... Call for Details

Luke Mobley..... (205) 207-0999

LIVESTOCK REPRESENTATIVES:

David Hobbs, *Charolais Journal*..... (913) 515-1215

Guy Peverley, *Stock Exchange*..... (785) 456-4390

Harlan Powers, Special Assignment..... (217) 358-4418

HEALTH:

All cattle will be accompanied with proper health certificates for immediate shipping. All bulls will be tested negative for trichomoniasis and BVD.

GUARANTEE:

All bulls guaranteed to be sound breeders.

INSURANCE:

Available at settlement desk.

TERMS AND CONDITIONS:

A standard set of terms and conditions will be available at the settlement desk. No cattle will be loaded until the conclusion of the sale. Buyers unable to attend the sale may send their bids with the sale management, the auctioneer or the livestock representatives.

GLOSSARY:

EPD—Expected Progeny Difference—The difference in performance to be expected from future progeny of the individual compared with the breed average.

CE—Calving-Ease (Higher Number Better)

BW—Birth Weight

WW—Weaning Weight

YW—Yearling Weight

MK—Milk

MCE—Calving-Ease Maternal

MTL—Total Maternal

SC—Scrotal Circumference

CW—Hot Carcass Weight

REA—Ribeye Area

FAT—Fat over the 13th rib

MB—Marbling Score

TSI—Terminal Sire Index—represents a dollar index for terminal progeny produced for a bull, ranking them for profit potential.

AVERAGE EPD FOR NON-PARENTS OF THE CHAROLAIS BREED

| CE | BW | WW | YW | MK | MCE | MTL | SC | CW | REA | FAT | MB | TSI |
|------|------|----|-----|----|-----|-----|-----|----|------|-------|------|-------|
| 11.4 | -1.2 | 63 | 114 | 25 | 9.7 | 56 | 1.0 | 25 | 0.70 | 0.015 | 0.13 | 266.9 |



**PETERSON
FARMS
CHAROLAIS**

Steve & Sandy Peterson | Jeremiah, Andrew, & Joey
7285 Outer Rd. | Mountain Grove, MO 65711
(417) 926-5336 days | (417) 259-1493 cell



M6
NEW WHISTLE
603 P ET

1

PF MR BUDSMAN 3000 P

CHAROLAIS | 2/28/2023 | POLLED | M993827

Sire M6 BELLS & WHISTLES 258 P
M6 NEW WHISTLE 603 P ET
M6 MS NEW QUALITY 232 P

Dam HPR BUDDYBEAR 3600 ET
PF MAGGIE 9179 P
PF MISS COLLETTE 0048PET

| CE | BW | WW | YW | MK | MCE | MTL | SC | CW | REA | FAT | MB | TSI |
|-----|------|----|-----|----|-----|-----|-----|----|------|--------|------|-------|
| 9.2 | -0.2 | 58 | 105 | 27 | 6.6 | 55 | 1.2 | 17 | 0.71 | -0.021 | 0.15 | 258.6 |

ACT BW: 73 (102) | ADJ WW: () | ADJ YW: ()

Consigned By: PETERSON FARMS, MTN GROVE, MO

2

PF MR BELLS 3044 P

CHAROLAIS | 5/1/2023 | POLLED | M1007111

Sire M6 BELLS & WHISTLES 258 P
M6 NEW WHISTLE 603 P ET
M6 MS NEW QUALITY 232 P

Dam M6 MAKES IT EASY 723 P ET
PF MS MOLLY 8000 P
PF POLLY 8301 P

| CE | BW | WW | YW | MK | MCE | MTL | SC | CW | REA | FAT | MB | TSI |
|-----|------|----|-----|----|-----|-----|-----|----|------|--------|------|-------|
| 9.7 | -0.2 | 63 | 120 | 25 | 6.7 | 57 | 1.5 | 21 | 0.83 | -0.019 | 0.23 | 270.5 |

ACT BW: 75 (104) | ADJ WW: 685 (97) | ADJ YW: 1267 (105)

Consigned By: PETERSON FARMS, MTN GROVE, MO

Top 20% MARB

3

PF MR MAKE IT IMPRESSIVE 3019

CHAROLAIS | 4/11/2023 | POLLED | M993823

Sire M6 BELLS & WHISTLES 258 P
M6 NEW WHISTLE 603 P ET
M6 MS NEW QUALITY 232 P

Dam M6 MAKES IT EASY 723 P ET
PF MS OLYMPIAN 8121 P
PF FALICITY 4159 P

| CE | BW | WW | YW | MK | MCE | MTL | SC | CW | REA | FAT | MB | TSI |
|------|------|----|-----|----|-----|-----|-----|----|------|--------|------|-------|
| 15.1 | -3.8 | 59 | 111 | 24 | 9.8 | 54 | 1.3 | 23 | 0.81 | -0.019 | 0.18 | 277.7 |

ACT BW: 50 (69) | ADJ WW: 859 (94) | ADJ YW: ()

Consigned By: PETERSON FARMS, MTN GROVE, MO

Top 15% CE

4

PF RANCHER P 3040

CHAROLAIS | 4/11/2023 | POLLED | M1007107

Sire M6 BELLS & WHISTLES 258 P
M6 NEW WHISTLE 603 P ET
M6 MS NEW QUALITY 232 P

Dam PF CHROME 5080 P ET
PF POLLY 8205 P
SF MISS RANCHER 0560P

| CE | BW | WW | YW | MK | MCE | MTL | SC | CW | REA | FAT | MB | TSI |
|------|------|----|-----|----|-----|-----|-----|----|------|--------|------|-------|
| 10.1 | -0.2 | 55 | 107 | 28 | 8.0 | 55 | 1.2 | 15 | 0.75 | -0.014 | 0.26 | 262.0 |

ACT BW: 72 (101) | ADJ WW: 697 (99) | ADJ YW: 1145 (95)

Consigned By: PETERSON FARMS, MTN GROVE, MO

Top 15% MARB

5

PF MR HENRY 3011 P

CHAROLAIS | 3/30/2023 | POLLED | M993821

Sire M6 BELLS & WHISTLES 258 P
M6 NEW WHISTLE 603 P ET
 M6 MS NEW QUALITY 232 P

Dam KEYS-O-HENRY 128R
PF HENRYETTA 9012 P
 PF MS GERMAINE 2127 P

| CE | BW | WW | YW | MK | MCE | MTL | SC | CW | REA | FAT | MB | TSI |
|------|------|----|-----|----|-----|-----|-----|----|------|--------|------|-------|
| 12.6 | -1.7 | 68 | 116 | 28 | 9.1 | 62 | 1.3 | 24 | 0.89 | -0.017 | 0.16 | 275.2 |

ACT BW: 70 (98) | ADJ WW: 920 (112) | ADJ YW: 1333 (105)

Consigned By: PETERSON FARMS, MTN GROVE, MO

Top 25% MCE & TSI; 20% REA; and 15% MARB

6

PF TEN-ACIOUS P 3033

CHAROLAIS | 4/24/2023 | POLLED | M1007110

Sire M6 BELLS & WHISTLES 258 P
M6 NEW WHISTLE 603 P ET
 M6 MS NEW QUALITY 232 P

Dam KEYS TENACIOUS 109X
PF MS TENACIOUS 3193
 PF CANDY BANNER 2002 PET

| CE | BW | WW | YW | MK | MCE | MTL | SC | CW | REA | FAT | MB | TSI |
|------|------|----|-----|----|-----|-----|-----|----|------|--------|------|-------|
| 10.1 | -0.3 | 61 | 121 | 25 | 8.1 | 56 | 1.3 | 19 | 0.75 | -0.014 | 0.13 | 260.9 |

ACT BW: 70 (97) | ADJ WW: 690 (98) | ADJ YW: 1240 (103)

Consigned By: PETERSON FARMS, MTN GROVE, MO

KEYS
 COWBOY
 70E



7

PF MR BLOCKBUSTER 3025 P

CHAROLAIS | 4/14/2023 | POLLED | M993830

Sire KEYS COWBOY 15C
KEYS COWBOY 70E
 MISS KEY MAYBELLINE 177Z

Dam SOS JAMBUSTER PLD 914J
PF MS MARY 4070 P
 PF MIRACLE 1164 PLD

| CE | BW | WW | YW | MK | MCE | MTL | SC | CW | REA | FAT | MB | TSI |
|-----|-----|----|----|----|-----|-----|----|----|------|-------|------|-------|
| 7.4 | 1.1 | 55 | 93 | 23 | 8.6 | 51 | | 21 | 0.76 | 0.004 | 0.12 | 259.3 |

ACT BW: 75 (105) | ADJ WW: 930 (102) | ADJ YW: ()

Consigned By: PETERSON FARMS, MTN GROVE, MO

8

PF MR CASCADE 3314 P

CHAROLAIS | 4/14/2023 | POLLED | M1007112

Sire KEYS COWBOY 15C
KEYS COWBOY 70E
 MISS KEY MAYBELLINE 177Z

Dam THREE TREESPEUGEOT2940ET
PF JODIE 8349 P
 PF MS JACKPOT 5074 P

| CE | BW | WW | YW | MK | MCE | MTL | SC | CW | REA | FAT | MB | TSI |
|------|-----|----|----|----|------|-----|----|----|------|--------|------|-------|
| 11.8 | 1.2 | 58 | 93 | 24 | 11.8 | 53 | | 19 | 0.90 | -0.001 | 0.09 | 261.7 |

ACT BW: 80 (112) | ADJ WW: 721 (102) | ADJ YW: 1163 (96)

Consigned By: PETERSON FARMS, MTN GROVE, MO

9

PF MR POLLED GRID 3022 P

CHAROLAIS | 4/25/2023 | POLLED | M993829

Sire KEYS COWBOY 15C
KEYS COWBOY 70E
 MISS KEY MAYBELLINE 177Z

Dam ACE-ORR EFFICIENT 97Z
PF MS EASY 8182 P
 PF MS MAKES IT EASY 3209

| CE | BW | WW | YW | MK | MCE | MTL | SC | CW | REA | FAT | MB | TSI |
|------|------|----|----|----|------|-----|----|----|------|--------|------|-------|
| 12.2 | -1.1 | 54 | 97 | 29 | 11.4 | 56 | | 28 | 0.91 | -0.005 | 0.20 | 283.6 |

ACT BW: 65 (90) | ADJ WW: 878 (97) | ADJ YW: ()

Consigned By: PETERSON FARMS, MTN GROVE, MO

Top 15% REA and 20% TSI

10

PF MR WYOMING WIND 3050 P

CHAROLAIS | 4/22/2023 | POLLED | M993826

Sire KEYS COWBOY 15C
KEYS COWBOY 70E
 MISS KEY MAYBELLINE 177Z

Dam PF MR IMPRESSIVE 5006 PLD
PF BAR S MS 9025 P
 BARS MS WIND 3114 P ET

| CE | BW | WW | YW | MK | MCE | MTL | SC | CW | REA | FAT | MB | TSI |
|-----|-----|----|-----|----|-----|-----|----|----|------|-------|------|-------|
| 8.8 | 0.3 | 63 | 102 | 25 | 8.9 | 56 | | 19 | 0.81 | 0.006 | 0.11 | 256.7 |

ACT BW: 75 (105) | ADJ WW: 956 (105) | ADJ YW: ()

Consigned By: PETERSON FARMS, MTN GROVE, MO

11

PF MR EATON 3031 P

CHAROLAIS | 4/23/2023 | POLLED | M993825

Sire KEYS COWBOY 15C
KEYS COWBOY 70E
 MISS KEY MAYBELLINE 177Z

Dam PF CHROME 5080 P ET
PF POLLY 8359 P
 PF MISS DUTCHESS 6109 P

| CE | BW | WW | YW | MK | MCE | MTL | SC | CW | REA | FAT | MB | TSI |
|-----|-----|----|----|----|-----|-----|----|----|------|--------|------|-------|
| 7.4 | 1.9 | 56 | 95 | 27 | 9.2 | 56 | | 15 | 0.81 | -0.002 | 0.17 | 254.1 |

ACT BW: 80 (112) | ADJ WW: 923 (102) | ADJ YW: ()

Consigned By: PETERSON FARMS, MTN GROVE, MO

12

PF MR ALLIANCE P 3306

CHAROLAIS | 8/24/2023 | POLLED | M1007552

Sire KEYS COWBOY 15C
KEYS COWBOY 70E
 MISS KEY MAYBELLINE 177Z

Dam PF MR IMPRESSIVE 5006 PLD
PF MS TENATIOUS 7036 P
 PF MS TENATIOUS 4006 P

| CE | BW | WW | YW | MK | MCE | MTL | SC | CW | REA | FAT | MB | TSI |
|------|------|----|----|----|-----|-----|----|----|------|--------|------|-------|
| 11.2 | -0.8 | 56 | 98 | 23 | 9.6 | 51 | | 22 | 0.79 | -0.002 | 0.09 | 264.7 |

ACT BW: 80 (96) | ADJ WW: 682 (92) | ADJ YW: 1288 (102)

Consigned By: PETERSON FARMS, MTN GROVE, MO

13

PF MR BEYOND 3305

CHAROLAIS | 8/24/2023 | POLLED | M1007109

Sire KEYS COWBOY 15C
KEYS COWBOY 70E
 MISS KEY MAYBELLINE 177Z

Dam PF CHROME 5080 P ET
PF POLLY 9131 P
 PF DUTCHESS 6010 P

| CE | BW | WW | YW | MK | MCE | MTL | SC | CW | REA | FAT | MB | TSI |
|-----|-----|----|----|----|-----|-----|----|----|------|--------|------|-------|
| 9.7 | 0.8 | 56 | 91 | 28 | 9.1 | 57 | | 16 | 0.79 | -0.007 | 0.18 | 257.8 |

ACT BW: 85 (104) | ADJ WW: 795 (108) | ADJ YW: 1251 (99)

Consigned By: PETERSON FARMS, MTN GROVE, MO

TR
MR FIREWATER
5792RET



14

PF MR MIRAGE 3012 P

CHAROLAIS | 3/31/2023 | POLLED | M993822

Sire TR MR FIRE WATER 5792RET
MACY MEADOWS WHIPPERSNAPPER
ACE MS BUD 2419 ET

Dam ACE-ORR EFFICIENT 972
PF MS EFFICIENT 4034 P
PF WINDY 8380 P

| CE | BW | WW | YW | MK | MCE | MTL | SC | CW | REA | FAT | MB | TSI |
|-----|-----|----|----|----|-----|-----|-----|----|------|-------|------|-------|
| 4.8 | 0.5 | 52 | 82 | 27 | 4.7 | 53 | 1.1 | 20 | 0.73 | 0.016 | 0.08 | 251.1 |

ACT BW: 80 (111) | ADJ WW: 839 (102) | ADJ YW: 1175 (92)

Consigned By: PETERSON FARMS, MTN GROVE, MO

15

PF MR SNAPPER 3029 P

CHAROLAIS | 4/23/2023 | POLLED | M993824

Sire TR MR FIRE WATER 5792RET
MACY MEADOWS WHIPPERSNAPPER
ACE MS BUD 2419 ET

Dam THREE TREES WIND 3001 ET
PF WINDY 8365 P
PF LADY PEUGEOT 5026 P

| CE | BW | WW | YW | MK | MCE | MTL | SC | CW | REA | FAT | MB | TSI |
|-----|-----|----|----|----|-----|-----|-----|----|------|-------|------|-------|
| 4.9 | 0.2 | 48 | 82 | 28 | 3.8 | 52 | 1.1 | 13 | 0.62 | 0.019 | 0.06 | 237.8 |

ACT BW: 70 (98) | ADJ WW: 926 (102) | ADJ YW: ()

Consigned By: PETERSON FARMS, MTN GROVE, MO

16

PF MR BUDDYBEAR 3049 P

CHAROLAIS | 4/18/2023 | POLLED | M993834

Sire TR MR FIRE WATER 5792RET
MACY MEADOWS WHIPPERSNAPPER
ACE MS BUD 2419 ET

Dam HPR BUDDYBEAR 3600 ET
PF GEANIE 9040P
PF DUTCHESS 6010 P

| CE | BW | WW | YW | MK | MCE | MTL | SC | CW | REA | FAT | MB | TSI |
|-----|------|----|----|----|-----|-----|-----|----|------|-------|------|-------|
| 8.9 | -1.4 | 36 | 69 | 25 | 4.9 | 43 | 0.7 | 13 | 0.46 | 0.017 | 0.00 | 237.6 |

ACT BW: 66 (91) | ADJ WW: 831 (91) | ADJ YW: ()

Consigned By: PETERSON FARMS, MTN GROVE, MO

17

PF MR EASY CHOICE P 3043

CHAROLAIS | 4/18/2023 | POLLED | M1007108

Sire TR MR FIRE WATER 5792RET
MACY MEADOWS WHIPPERSNAPPER
ACE MS BUD 2419 ET

Dam KEYS NEW CHOICE 23P
PF EASY CHOICE 7043 P
PF DUTCHESS 308 P ET

| CE | BW | WW | YW | MK | MCE | MTL | SC | CW | REA | FAT | MB | TSI |
|-----|------|----|----|----|-----|-----|-----|----|------|-------|------|-------|
| 6.1 | -0.5 | 48 | 82 | 25 | 3.7 | 49 | 0.7 | 14 | 0.63 | 0.022 | 0.03 | 238.2 |

ACT BW: 70 (98) | ADJ WW: 739 (105) | ADJ YW: 1232 (102)

Consigned By: PETERSON FARMS, MTN GROVE, MO

18

PF MR PEUGEOT 3047 P

CHAROLAIS | 5/10/2023 | POLLED | M993832

Sire PF MR BEAST MODE 5000 PLD
PF MR CHROME 974 P
 PF POLLY 9134 P

Dam THREE TREESPEUGEOT3017ET
PF MS PEUGEOT 0052 P
 PF IMPRESSIONS 9136

| CE | BW | WW | YW | MK | MCE | MTL | SC | CW | REA | FAT | MB | TSI |
|-----|-----|----|-----|----|------|-----|----|----|------|-------|------|-------|
| 9.9 | 1.5 | 61 | 104 | 26 | 10.8 | 56 | | 14 | 0.67 | 0.000 | 0.16 | 250.1 |

ACT BW: 70 (98) | ADJ WW: 936 (103) | ADJ YW: ()

Consigned By: PETERSON FARMS, MTN GROVE, MO

19

PF MR MIRAGE 3048 P

CHAROLAIS | 5/15/2023 | POLLED | M993833

Sire PF MR BEAST MODE 5000 PLD
PF MR CHROME 974 P
 PF POLLY 9134 P

Dam PF MIRAGE 9066 P
PF MARY 8233 P
 PF MISS IMPRESSED 030 PLD

| CE | BW | WW | YW | MK | MCE | MTL | SC | CW | REA | FAT | MB | TSI |
|-----|-----|----|-----|----|-----|-----|----|----|------|-------|------|-------|
| 8.1 | 1.7 | 64 | 107 | 24 | 9.1 | 56 | | 17 | 0.58 | 0.004 | 0.16 | 249.3 |

ACT BW: 75 (105) | ADJ WW: 1006 (111) | ADJ YW: ()

Consigned By: PETERSON FARMS, MTN GROVE, MO



WC
 ENCOMPASS
 0507 P

20

BPF TR TL ENCOMPASS

CHAROLAIS | 3/10/2024 | POLLED | M1001370

Sire WC INFERNO 6561 P
WC ENCOMPASS 0507 P
 WC DUTCHESS 7516 P

Dam DC/CRJ TANK E108 P
TANK/LEDGER 2 1 2020F
 BPF MS LEDGER

| CE | BW | WW | YW | MK | MCE | MTL | SC | CW | REA | FAT | MB | TSI |
|------|------|----|-----|----|------|-----|-----|----|------|-------|------|-------|
| 15.9 | -3.5 | 81 | 146 | 34 | 12.5 | 74 | 1.1 | 53 | 1.03 | 0.016 | 0.22 | 323.7 |

ACT BW: 60 (90) | ADJ WW: () | ADJ YW: ()

Consigned By: BANNER PINES FARM THE TOWNSEND RANCH, GOODMAN, MO

Top 15% CE & BW; 5% WW & REA; 4% YW; 8% Milk; 20% MCE; 2% MTL; 1% CW & TSI; and 25% MARB.

21

BPF TR LT BV ENCOMPASS

CHAROLAIS | 2/15/2024 | POLLED | M1001369

Sire WC INFERNO 6561 P
WC ENCOMPASS 0507 P
 WC DUTCHESS 7516 P

Dam DC POMONA LANDMARK C005P
TANK/NOAHLEDGER/LANDMARK BV 22
 TANK/LEDGER 2 1 2020F

| CE | BW | WW | YW | MK | MCE | MTL | SC | CW | REA | FAT | MB | TSI |
|------|------|----|-----|----|-----|-----|----|----|------|-------|------|-------|
| 13.9 | -2.2 | 82 | 141 | 36 | 9.1 | 76 | | 47 | 1.04 | 0.014 | 0.21 | 312.3 |

ACT BW: 68 (110) | ADJ WW: () | ADJ YW: ()

Consigned By: BANNER PINES FARM THE TOWNSEND RANCH, GOODMAN, MO

Top 4% WW, Milk & REA; 7% YW; 2% MTL, CW & TSI; and 25% MARB

LT
AFFINITY
6221 PLD



22

TGLC QUEI 5M3

CHAROLAIS | 1/3/2021 | POLLED | M956839

Sire LT RUSHMORE 8060 PLD
LT AFFINITY 6221 PLD
LT ATHENA 1247

Dam VPI FREE LUNCH 708T
FINK MISS LADY 6324 2691 FL
MF MISS LADY 2691 6868 NS

| CE | BW | WW | YW | MK | MCE | MTL | SC | CW | REA | FAT | MB | TSI |
|------|------|----|-----|----|-----|-----|-----|----|------|-------|------|-------|
| 16.3 | -6.5 | 56 | 100 | 21 | 9.7 | 49 | 1.4 | 15 | 0.61 | 0.047 | 0.35 | 258.0 |

ACT BW: 88 (100) | ADJ WW: () | ADJ YW: ()

Consigned By: TALLGRASS LAND AND CATTLE, VALLEY CENTER, KS

Top 2% BW; 25% SC and 4% MARB

CCC WC
RESOURCE
417 P



23

PF-WH RESOURCE 2330

CHAROLAIS | 9/16/2023 | POLLED | M1000686

Sire LT RUSHMORE 8060 PLD
CCC WC RESOURCE 417 P
WC CCC BLUE GIRL 1528 P

Dam WH REALITY 2026 P
WH LADY REALITY 5121 P
WH LADY LEIA 2073 P

| CE | BW | WW | YW | MK | MCE | MTL | SC | CW | REA | FAT | MB | TSI |
|------|------|----|-----|----|-----|-----|-----|----|------|-------|------|-------|
| 10.7 | -1.0 | 64 | 109 | 25 | 7.3 | 57 | 0.5 | 22 | 0.80 | 0.033 | 0.23 | 264.4 |

ACT BW: 76 (99) | ADJ WW: 559 (107) | ADJ YW: 1252 (100)

Consigned By: PETERSON FARMS, MTN GROVE, MO

Top 20% MARB

24

PF-WH RESOURCE 2328

CHAROLAIS | 9/13/2023 | POLLED | M1000687

Sire LT RUSHMORE 8060 PLD
CCC WC RESOURCE 417 P
WC CCC BLUE GIRL 1528 P

Dam LT BLUEGRASS 4017 P
WH BECKY BLUE 2070
WH BECKY 9068 PLD

| CE | BW | WW | YW | MK | MCE | MTL | SC | CW | REA | FAT | MB | TSI |
|------|------|----|-----|----|-----|-----|-----|----|------|-------|------|-------|
| 10.3 | -0.6 | 72 | 120 | 28 | 7.2 | 64 | 0.5 | 30 | 1.08 | 0.035 | 0.27 | 282.7 |

ACT BW: 76 (100) | ADJ WW: 593 (113) | ADJ YW: 1335 (106)

Consigned By: PETERSON FARMS, MTN GROVE, MO

Top 20% WW; 3% REA; 15% MARB and 20% TSI



AC-ORR
LOCK N LOAD
243P

25

PF-WH LYLE 341 PLD

CHAROLAIS | 8/19/2023 | POLLED | M1000485

Sire ACE-ORR LOCK N LOAD 243P
LCC EQUATOR 1750
WC CLARICE 7305 P

Dam HF TYLER 1808 ET P
WH LYLIA 138 PLD
WH DELYLIA 701 PLD

| CE | BW | WW | YW | MK | MCE | MTL | SC | CW | REA | FAT | MB | TSI |
|------|------|----|-----|----|------|-----|-----|----|------|-------|------|-------|
| 13.2 | -1.5 | 57 | 101 | 25 | 11.3 | 53 | 1.3 | 11 | 0.30 | 0.002 | 0.17 | 239.4 |

ACT BW: 72 (92) | ADJ WW: 625 (90) | ADJ YW: 1065 (96)

Consigned By: PETERSON FARMS, MTN GROVE, MO

26

PF-WH SHANE 340 PLD

CHAROLAIS | 8/15/2023 | POLLED | M1000488

Sire ACE-ORR LOCK N LOAD 243P
LCC EQUATOR 1750
WC CLARICE 7305 P

Dam K&D MILEMAN
K&D RAYA
WH SHAWNIA Y036 P

| CE | BW | WW | YW | MK | MCE | MTL | SC | CW | REA | FAT | MB | TSI |
|------|------|----|-----|----|------|-----|----|----|------|--------|------|-------|
| 13.0 | -0.6 | 66 | 107 | 29 | 13.5 | 61 | | 22 | 0.58 | -0.004 | 0.25 | 266.5 |

ACT BW: 81 (104) | ADJ WW: 737 (105) | ADJ YW: 1199 (100)

Consigned By: PETERSON FARMS, MTN GROVE, MO

Top 15% MCE and MARB

27

PF-WH NATE 361 PLD

CHAROLAIS | 10/18/2023 | POLLED | M1000480

Sire ACE-ORR LOCK N LOAD 243P
LCC EQUATOR 1750
WC CLARICE 7305 P

Dam LT BLUE VALUE 7903 ET
WC NADINE 1017
MISS NADINE MACK

| CE | BW | WW | YW | MK | MCE | MTL | SC | CW | REA | FAT | MB | TSI |
|------|------|----|----|----|------|-----|-----|----|------|-------|------|-------|
| 14.1 | -1.4 | 61 | 91 | 32 | 15.0 | 63 | 1.2 | 18 | 0.37 | 0.008 | 0.41 | 262.2 |

ACT BW: 84 (100) | ADJ WW: 598 (98) | ADJ YW: 1059 (90)

Consigned By: PETERSON FARMS, MTN GROVE, MO

Top 25% CE; 15% Milk; 4% MCE; 25% MTL and 2% MARB

PETERSON FARMS CHAROLAIS
TOP PICK
33rd Annual Bull Sale
April 4, 2026

WDZ
PHENOM
839



28

PF-WH PATTRICK 2337

CHAROLAIS | 10/20/2023 | POLLED | M1000491

Sire **WH PATTRICK 025 PLD**
WH INGRA 836 PLD

Dam **WH SPORT'S ROSE Z075**
WH DUKES ROSE X097 P

| CE | BW | WW | YW | MK | MCE | MTL | SC | CW | REA | FAT | MB | TSI |
|------|------|----|----|----|------|-----|----|----|------|--------|------|-------|
| 11.1 | -0.1 | 55 | 87 | 30 | 10.6 | 57 | | 12 | 0.51 | -0.017 | 0.11 | 245.3 |

ACT BW: 80 (105) | ADJ WW: 569 (109) | ADJ YW: 1185 (94)

Consigned By: PETERSON FARMS, MTN GROVE, MO

WC
MILESTONE
5223 P



29

PF-WH ALAN 358 PLD

CHAROLAIS | 10/11/2023 | POLLED | M1000481

Sire **WH MORANO 938 PLD**
WH DUTCHESS 002 PLD

Dam **WH ALAYA 029 PLD**
CREEK CUT GRETA 576P ET

| CE | BW | WW | YW | MK | MCE | MTL | SC | CW | REA | FAT | MB | TSI |
|------|------|----|-----|----|------|-----|-----|----|------|-------|------|-------|
| 10.7 | -1.5 | 66 | 128 | 26 | 12.7 | 59 | 0.7 | 28 | 0.97 | 0.022 | 0.21 | 279.0 |

ACT BW: 81 (99) | ADJ WW: 581 (96) | ADJ YW: 1203 (102)

Consigned By: PETERSON FARMS, MTN GROVE, MO

Top 20% MCE; 4% REA; 25% MARB and 25% TSI

30

PF-WH LEE 351 PLD

CHAROLAIS | 9/19/2023 | POLLED | M1000482

Sire **WH MORANO 938 PLD**
WH DUTCHESS 002 PLD

Dam **WH NADYLEE 032 PLD**
WC NADINE 1017

| CE | BW | WW | YW | MK | MCE | MTL | SC | CW | REA | FAT | MB | TSI |
|------|------|----|-----|----|------|-----|-----|----|------|--------|------|-------|
| 10.9 | -0.5 | 69 | 133 | 32 | 11.4 | 66 | 0.9 | 25 | 0.96 | -0.007 | 0.03 | 270.1 |

ACT BW: 81 (99) | ADJ WW: 687 (99) | ADJ YW: 1242 (112)

Consigned By: PETERSON FARMS, MTN GROVE, MO

Top 15% YW; 15% Milk; 15% MTL and 9% REA

Angus



31

SINNING'S EMERALD L97

ANGUS | 1/22/2023 | POLLED | AAA20610794

Sire CONNEALY EMERALD
SINNING'S EMERALD H91
SINNING'S GAMMER D91

Dam PLEASANT VALLEY INSIGHT 1504
SINNING'S HEATHERBLOOM F97
SINNING'S HEATHERBLOOM D88

| CE | BW | WW | YW | MA | CM | SC | DC | CW | RE | MB | \$W | \$B |
|----|-----|----|-----|----|----|------|----|----|------|------|-----|-----|
| 5 | 1.9 | 55 | 105 | 28 | 12 | 1.54 | 11 | 56 | 0.80 | 0.59 | 53 | 155 |

ACT BW: | ADJ WW: | ADJ YW:

Consigned by: WILLIAMS CATTLE CO., MTN GROVE, MO

32

FULPER CHARISMA L00

ANGUS | 2/11/2023 | POLLED | AAA20623610

Sire CONNEALY CONFIDENCE PLUS
RUGGLES CHARISMA 0643
MILL BAR BLACKEYES 7432

Dam G A R RETAIL PRODUCT
FULPER PRODUCT 069
G A R 1407 NEW DESIGN 1842

| CE | BW | WW | YW | MA | CM | SC | DC | CW | RE | MB | \$W | \$B |
|----|----|----|-----|----|----|------|----|----|------|------|-----|-----|
| 11 | 0 | 54 | 102 | 28 | 9 | 1.05 | 13 | 40 | 0.83 | 0.94 | 56 | 160 |

ACT BW: | ADJ WW: | ADJ YW:

Consigned by: WILLIAMS CATTLE CO., MTN GROVE, MO

33

WRR EXPONENTIAL 318

ANGUS | 3/8/2023 | POLLED | AAA20631519

Sire CASINO BOMBER N33
K C F BENNETT EXPONENTIAL
K C F MISS SOUTHSIDE B226

Dam EXAR STUD 4658B
WRR FOREVER LASSIE 793
WRR FOREVER LASSIE 546

| CE | BW | WW | YW | MA | CM | SC | DC | CW | RE | MB | \$W | \$B |
|----|-----|----|-----|----|----|------|----|----|------|------|-----|-----|
| 12 | 0.8 | 86 | 146 | 20 | 9 | 0.97 | 17 | 65 | 0.82 | 0.88 | 75 | 179 |

ACT BW: | ADJ WW: | ADJ YW:

Consigned by: WILLIAMS CATTLE CO., MTN GROVE, MO

34

WILLCATCO COMPASS 2319

ANGUS | 9/15/2022 | POLLED | AAA20796928

Sire SYDGEN TRUST 6228
SYDGEN BLACK PEARL 2006
SYDGEN ANITA 8611

Dam BASIN ADVANCE 3134
HOPEWELL CAMILLA C210
HOPEWELL CAMILLA Z379

| CE | BW | WW | YW | MA | CM | SC | DC | CW | RE | MB | \$W | \$B |
|----|------|----|-----|----|----|------|----|----|------|------|-----|-----|
| 15 | -1.5 | 63 | 121 | 28 | 15 | 0.33 | 16 | 61 | 0.85 | 1.19 | 63 | 200 |

ACT BW: | ADJ WW: | ADJ YW:

Consigned by: WILLIAMS CATTLE CO., MTN GROVE, MO

35

SMITH VALLEY ASHLAND 2008

ANGUS | 1/3/2020 | POLLED | AAA19740255

Sire **G A R ASHLAND**
 G A R EARLY BIRD
 CHAIR ROCK AMBUSH 1018

Dam **SPRUCE MTN ERICA 8023**
 BALDRIDGE COLONEL C251
 PF 307R ERICA 4030

| CE | BW | WW | YW | MA | CM | SC | DC | CW | RE | MB | \$W | \$B |
|----|-----|----|-----|----|----|------|----|----|------|------|-----|-----|
| 1 | 4.4 | 95 | 161 | 18 | 6 | 0.68 | 16 | 61 | 0.77 | 0.84 | 68 | 157 |

ACT BW: | ADJ WW: | ADJ YW:

Consigned by: WILLIAMS CATTLE CO., MTN GROVE, MO

36

COMMERCIAL BULL

50% CHAROLAIS, 50% ANGUS | POLLED

Sire REGISTERED CHAROLAIS

Dam REGISTERED ANGUS

| CE | BW | WW | YW | MK | MCE | MTL | SC | CW | REA | FAT | MB | TSI |
|----|----|----|----|----|-----|-----|----|----|-----|-----|----|-----|
| | | | | | | | | | | | | |

Consigned By: PETERSON FARMS, MTN GROVE, MO

37

PF MR RED DUTCH 3005 P

CHAROLAIS | 3/18/2023 | POLLED | MP5643

Sire RED ANGUS/RED ANGUS

Dam **PF MS CHROME 0043 P**
 PF CHROME 5080 P ET
 PF PAULETT 8350 P

| CE | BW | WW | YW | MK | MCE | MTL | SC | CW | REA | FAT | MB | TSI |
|----|----|----|----|----|-----|-----|----|----|-----|-----|----|-----|
| | | | | | | | | | | | | |

ACT BW: 80 (100) | ADJ WW: 826 (100) | ADJ YW: 1239 (100)

Consigned By: PETERSON FARMS, MTN GROVE, MO

38

TGLC RAMBO 39M3

50% RED ANGUS | 1/30/2023 | POLLED | RAAA4894438

Sire **BECKTON EPIC R397 K**
 BECKTON EPIC K F075
 BECKTON KIT F468 JL

Dam NOT ON FILE

| ProS | HB | GM | CE | BW | WW | YW | MK | CM | MB | YG | CW | RE |
|------|----|----|----|----|----|----|----|----|------|------|----|------|
| | | | | | | | | | 0.54 | 0.20 | 41 | 0.18 |

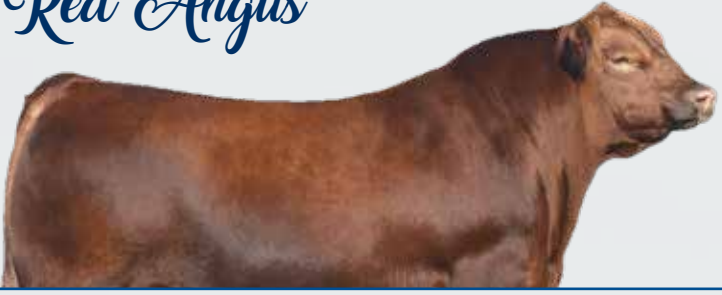
ACT BW: 85 | ADJ WW: 893 | ADJ YW: 1393

Consigned by: TALLGRASS LAND & CATTLE, VALLEY CENTER, KS

Peterson Farms Charolais is interested in feeding our customer's calves. If you're interested in this venture give Steve a call 417-259-1493..



Red Angus



39

TGLC TURBO 37M3

75% RED ANGUS | 1/29/2023 | POLLED | RAAA4894436

Sire TGLC SATURN 97M3
MLK CRK ESTONIA 4111

Dam TGLC GINGER 72M3
NOT ON FILE

| ProS | HB | GM | CE | BW | WW | YW | MK | CM | MB | YG | CW | RE |
|------|----|----|----|----|----|----|----|----|------|------|----|------|
| | | | 12 | | | | 21 | 7 | 0.39 | 0.08 | 26 | 0.13 |

ACT BW: 78 | ADJ WW: 778 | ADJ YW: 1374

Consigned by: TALLGRASS LAND & CATTLE, VALLEY CENTER, KS

40

TGLC R40 3XM3

RED ANGUS | 4/26/2023 | POLLED | RAAA4894434

Sire TWG TANGO 156D
DAMAR THORA Y156

Dam TGLC REBA 86M3
MLK CRK ESTONIA 4111

| ProS | HB | GM | CE | BW | WW | YW | MK | CM | MB | YG | CW | RE |
|------|----|----|----|------|----|-----|----|----|------|-------|----|------|
| 63 | 34 | 29 | 15 | -2.4 | 65 | 105 | 21 | 7 | 0.16 | -0.01 | 19 | 0.14 |

ACT BW: 40 | ADJ WW: 993 | ADJ YW: 1440

Consigned by: TALLGRASS LAND & CATTLE, VALLEY CENTER, KS

41

TGLC TROOPER 34M3L

45% MA, 46% AN, 4.5% CA | 1/4/2023 | POLLED | F539855

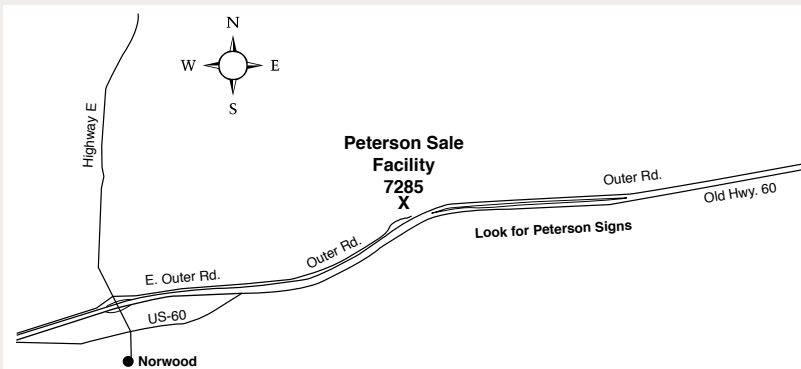
Sire LFCC UNSTOPPABLE 727X
LFCC LADY K 727T

Dam WYL HARLEY
4520

| CED | BW | WW | YW | MK | TM | CEM |
|-----|-----|----|----|----|----|-----|
| 11 | 2.6 | 25 | 29 | 25 | 38 | -5 |

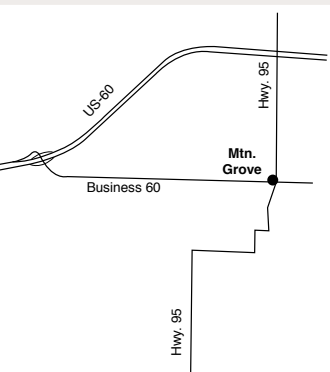
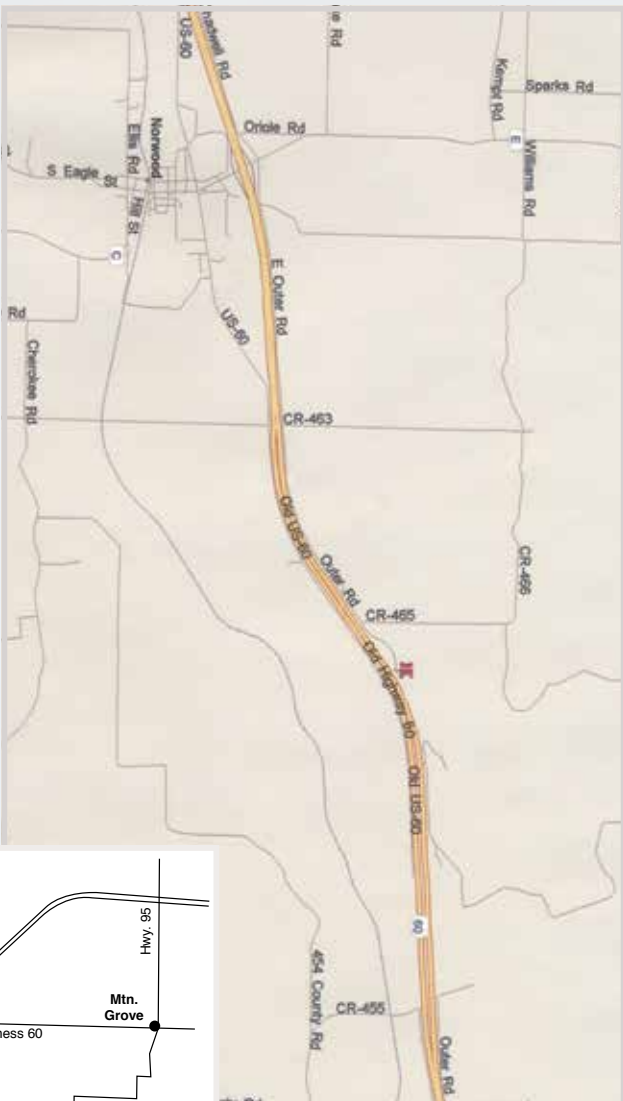
ACT BW: 84 | ADJ WW: 733 | ADJ YW: 1203

Consigned by: TALLGRASS LAND & CATTLE, VALLEY CENTER, KS





THANK YOU FOR ATTENDING THE
*32nd Annual
Top Pick Bull Sale*



GPS ADDRESS:

7285 Outer Road
Mountain Grove, MO 65711



2005 RUHL DRIVE
GUTHRIE, OK 73044

FIRST-CLASS • DATED MATERIAL